

Landout Field Reference Guide



Landout Fields & Airports

Bloomfield International	
Brightleaf Airstrip	
Deer Run Airpark	85KY
Flying C Farms Airport	6KY3
Foree Airport	12KY
Giltner Airport	1154
Harold Reynolds Airport	5KY8
Hornback Airport	86KY
Jake's Airfield	
Jeffries Field	6KY6
Land Out 1	
Lee Bottom	64I
Lincoln Farm Airport	21KY
Littlemount Airfield	
Mason Valley	3KY3
McGrew Field	66KY
Mike's Sod Farm	
Miles Field	3KY9
Nelsonville Airstrip	
Oz Airport	2KY4
Private Air Strip	
Rooster Field	40KY
Samuel Springs	
Schindler's Field	
Shady Acres	4KY8
Ultralight Field	
Wilkerson's Field	61IN
Willow Island	58KY
Woodledge Airport	82KY

Bloomfield International

Location

Latitude 37.9335° N Distance 15 miles
Longitude 85.2695° W Bearing 57°

Field

Elevation 770 ft Length 2000 ft
Orientation 10-28 Width N/A ft



Bloomfield International is a farm field near Bloomfield. Apparently, it was once used as an airstrip.

Mike landed there on 8/14/14, approximately where the red line is and was aero retrieved without difficulty. He landed east to west coming in over the barn.

The field is an active farm field and is currently planted in grass, but there is no guarantee that the crop won't change.

The field is slightly downhill from east to west, about 30 feet over 2000 feet.

Farm field near Bloomfield KY

Notes

Do not use for navigation, for flight verification only. Always consult the relevant publications for current and correct information. This information is provided free of charge with no warranties, expressed or implied.

Bloomfield International

Brightleaf Field

Location

Latitude 37.7150° N Distance 37.7 miles
Longitude 84.8235° W Bearing 100°

Field

Elevation 955 ft Length 1300 ft
Orientation 16-34 Width 50 ft



Runway is sod, very well kept at the time of visit. The strip is hidden away in the Brightleaf Golf Resort just south of Harrodsburg, KY.

The field is short and narrow, but would probable accommodate a 15m ship if exactly centered on runway and wing kept up until between runway edge marker lights. In other words use it as a last resort only.

Harrodsburg, KY area - **narrow** - use it as a last resort only

Notes

Do not use for navigation, for flight verification only. Always consult the relevant publications for current and correct information. This information is provided free of charge with no warranties, expressed or implied.

Brightleaf Field

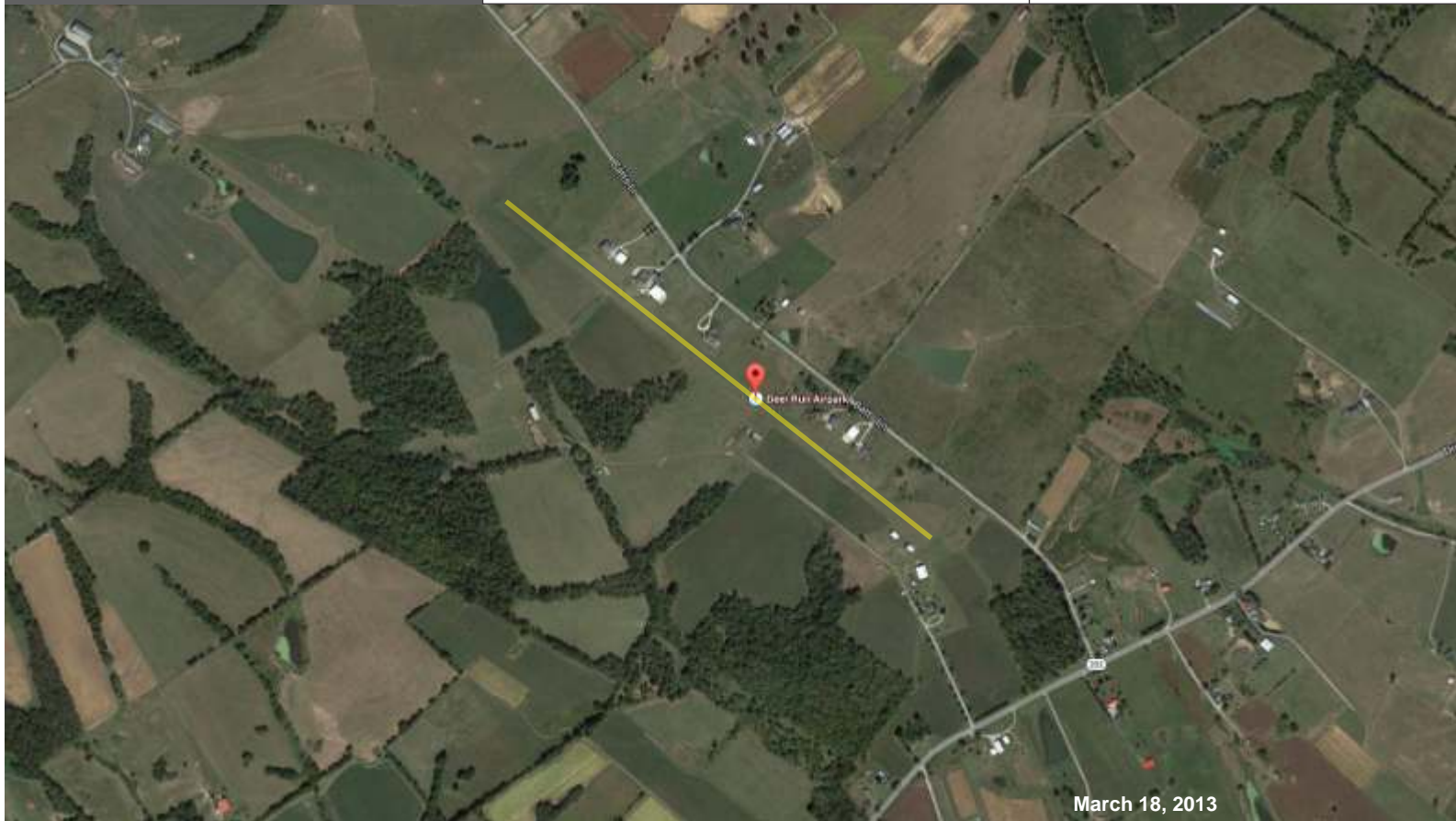
Deer Run Airpark 85KY

Location

Latitude 38.4703° N Distance 49 miles
Longitude 85.1386° W Bearing 23°

Field

Elevation 890 ft Length 3100 ft
Orientation 13-31 Width 70 ft



Picture shows the western berm.

Deer Run is a great airstrip owned by a consortium of current and retired professional pilots.

Runway is grass in good condition. Width may be a problem. There are low berms alternating on each side. If you stay in the center with a 15 meter ship you should be OK. Landing from the south there is a small berm on the east with plenty of room to the west. However, shortly down the field the situation reverses, although the western berm is much lower and probably not a factor.

The northern end was not closely inspected. Foree's is a close alternative.

Notes

Do not use for navigation, for flight verification only. Always consult the relevant publications for current and correct information. This information is provided free of charge with no warranties, expressed or implied.

Deer Run Airpark 85KY

Flying C Farm 6KY3

Location

Latitude 38.3286° N Distance 39 miles
Longitude 85.2142° W Bearing 24 °

Field

Elevation 850 ft Length 2060 ft
Orientation 01-19 Width 150 ft



Runway is grass in good condition with a sailplane friendly width.

Landing to the north is favored because of a slight uphill slope for about the first 1200 feet at which point a gentle but marked swale runs through the runway. North end of the runway is about 30 feet higher than the south end.

Owner is friendly to pilots.

This airstrip is near Rooster and greatly superior because of the width.

Notes

Do not use for navigation, for flight verification only. Always consult the relevant publications for current and correct information. This information is provided free of charge with no warranties, expressed or implied.

Flying C Farm 6KY3

Foree Airport 12KY

Location	
Latitude	38.4604° N
Longitude	85.1686° W
Distance	48 miles
Bearing	22°

Field	
Elevation	853 ft
Orientation	13-31
Length	1600 ft
Width	80 ft



Runway is grass. It slopes upward to the Northwest favoring a landing to the north.

There are 5 gallon paint buckets turned upside down marking the runway edges. I believe there are lights inside the buckets. The buckets stand about 14" high and are about 75 feet apart.

The width here is actually better than at Deer Run which is the closest alternate airstrip.

Access is excellent.

Notes

Do not use for navigation, for flight verification only. Always consult the relevant publications for current and correct information. This information is provided free of charge with no warranties, expressed or implied.

Foree Airport 12KY

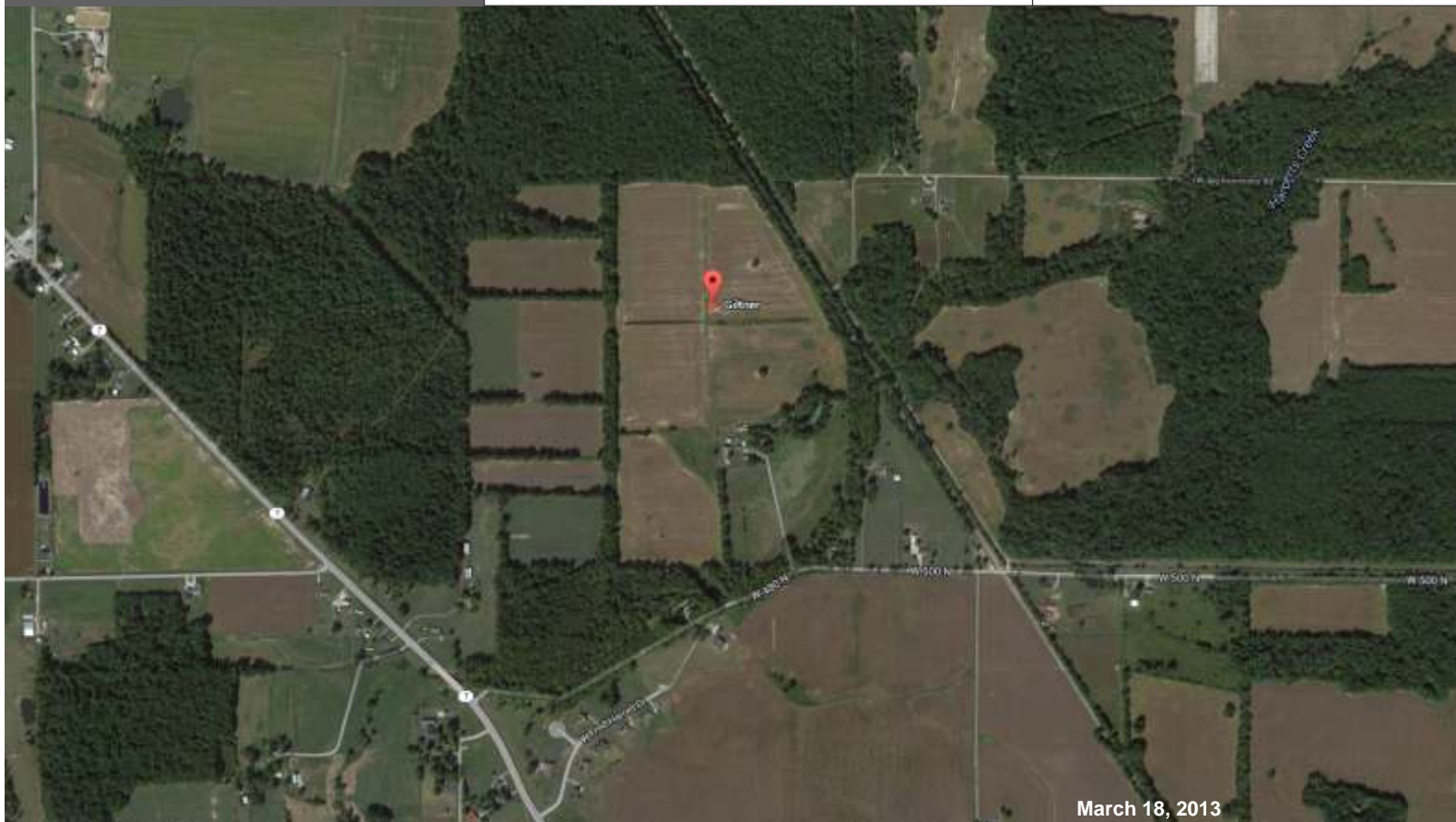
Giltner Airport I154

Location

Latitude 38.8159° N Distance 69 miles
Longitude 85.4463° W Bearing 03°

Field

Elevation 850 ft Length 1700 ft
Orientation 18-36 Width 10 ft



PRI (I154)|RY 18/36:1700x50-TURF-
RP18|MGR: MARK S ANDREASEN|812-
273-4285.

This field has been let go. Emergency only.
Most recent crop corn

Good emergency field immediately
southeast might be a better choice.

Owner is friendly.

Emergency only

Notes

Do not use for navigation, for flight verification only.
Always consult the relevant publications for current
and correct information. This information is provided
free of charge with no warranties, expressed or
implied.

Giltner Airport I154

Harold Reynolds 5KY8

Location

Latitude 37.8897° N Distance 32 miles
Longitude 84.9277° W Bearing 80°

Field

Elevation 860 ft Length 1400 ft
Orientation 04-22 Width 60 ft



Runway is grass. Owner says he keeps it mowed 60 feet wide.

Glider pilots are welcome to use the strip at their own risk. This field is located in an area where there are very few other good landing sites.

There is a windsock at the northeast end of the field, but it is small and I think would be very difficult to see. There are traffic cones marking the threshold of the northeast end of the runway.

Field is located midway between Lawrenceburg and Harrodsburg, Kentucky.

Notes

Do not use for navigation, for flight verification only. Always consult the relevant publications for current and correct information. This information is provided free of charge with no warranties, expressed or implied.

Harold Reynolds 5KY8

Hornback Airport 86KY

Location

Latitude 37.6225° N Distance 21 miles
Longitude 85.7914° W Bearing 229°

Field

Elevation 760 ft Length 800 ft
Orientation 01-19 Width 80 ft



Runway is grass in good condition at the time of visit.

The strip slopes downward from south to north. There are high tension power lines and a large garage on the southern end of the runway. (It is the T-shaped building in the lower center of the overhead picture.) The white area surrounding it is a gravel parking area.

Landing should only be done from north to south toward the building due to the runway slope and high tension lines. The approach from the north is unobstructed but there is a marked increase in the slope of the runway near the tree line.

Touchdown near the sailplane would be desirable.

View from North to South - Watch out for man standing near runway.

Notes

Do not use for navigation, for flight verification only. Always consult the relevant publications for current and correct information. This information is provided free of charge with no warranties, expressed or implied.

Hornback Airport 86KY

Jake's Field

Location

Latitude 38.4205° N Distance 44 miles
Longitude 85.2578° W Bearing 17°

Field

Elevation 903 ft Length 1500 ft
Orientation 02-20 Width 80 ft



Runway is grass and slopes upward from north to south.

Landing to the south is favored because of the slope.

There is a berm on the east side of the runway (near the pine tree in the top photo) starting about 600 feet from the north end.

There is width to the west if needed.

Landing to the south is favored

Notes

Do not use for navigation, for flight verification only. Always consult the relevant publications for current and correct information. This information is provided free of charge with no warranties, expressed or implied.

Jake's Field

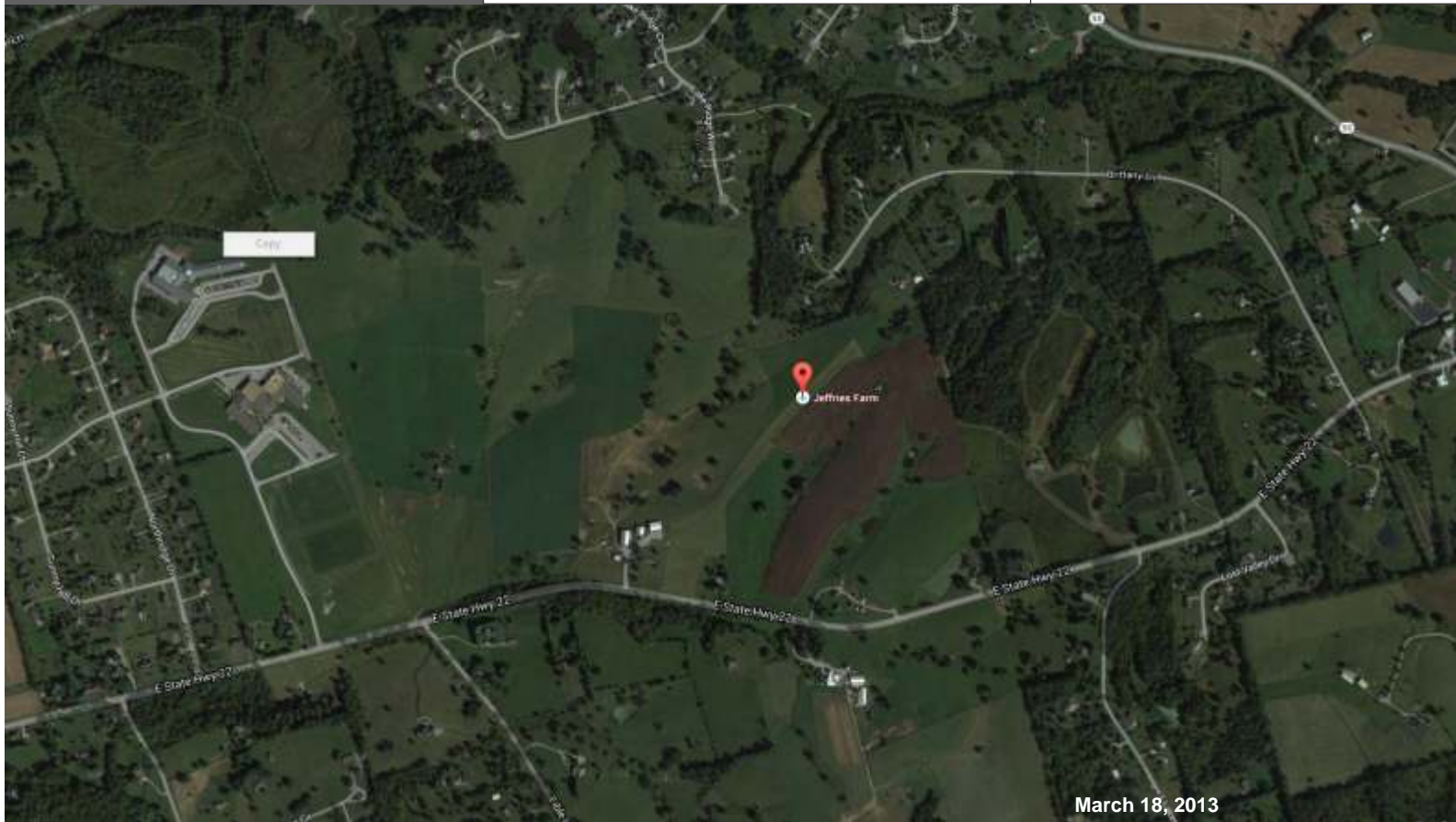
Jeffries Farm Airport 6KY6

Location

Latitude 38.3606° N Distance 38.5 miles
Longitude 85.3631° W Bearing 11°

Field

Elevation 860 ft Length 1500 ft
Orientation 04-22 Width 80 ft



Runway is sod, very well kept at the time of visit.

The strip slopes downward from the northeast to the southwest. Most marked slope is the first 500 feet on the southwest end. Best approach would be from the southwest landing to the northeast. Plan to touchdown about 500 feet from southwest threshold to avoid steepest slope.

Windssock is located on barn at southwest end of runway.

Best approach is from the southwest

Notes

Do not use for navigation, for flight verification only. Always consult the relevant publications for current and correct information. This information is provided free of charge with no warranties, expressed or implied.

Jeffries Farm Airport 6KY6

Land Out - 1

Location

Latitude 38.5550° N Distance 51.7 miles
Longitude 85.3375° W Bearing 10°

Field

Elevation 891 ft Length 2500 ft
Orientation 19-28 Width 80 ft



Field appears to have been planted in grass.

Orientation is basically east-west with power lines along the north and east borders. US 42 forms the east border. The field is approximately 180 feet wide for the first 1000 feet on the west end and broadens out to more than 400 feet at the east end. Mild undulations are present particularly in the west end. Would plan landing to the east with touchdown where the field widens, if wind permits. Field is basically flat, other than the undulations in the west end.

It is a farm field so changes could occur at any time. (visited 2/14/2013)

Wind permitting, would plan landing to the east with touchdown where the field widens

Notes

Do not use for navigation, for flight verification only. Always consult the relevant publications for current and correct information. This information is provided free of charge with no warranties, expressed or implied.

Land Out - 1

Lee Bottom 64I

Location

Latitude 38.6315° N Distance 56.4 miles
Longitude 85.4435° W Bearing 03°

Field

Elevation 470 ft Length 4080 ft
Orientation 18-36 Width 80 ft



Lee Bottom is a beautiful, well maintained airstrip on the banks of the Ohio River. There is a high bluff along the west side of the runway which can cause some turbulence if the wind is strong from the west and the landing is to the north.

(Note aerial view has been rotated 90 degrees clockwise - north end is to the right)

PUB (64I)|RY 18/36:4080x100-TURF-RP36|RY 18/36 YELLOW SQUARES FLUSH WITH GND MARK RY THLDS & WHITE TRAFFIC CONES MARK RY BOUNDARY.|RY18: RWY 18 APCH SLOPE 34:1 AT THLD.|RY36: APCH SLOPE 28:1 AT THLD.|MGR: GINGER DAVIDSON|812-866-3211

View to the North

Notes

Do not use for navigation, for flight verification only. Always consult the relevant publications for current and correct information. This information is provided free of charge with no warranties, expressed or implied.

Lee Bottom 64I

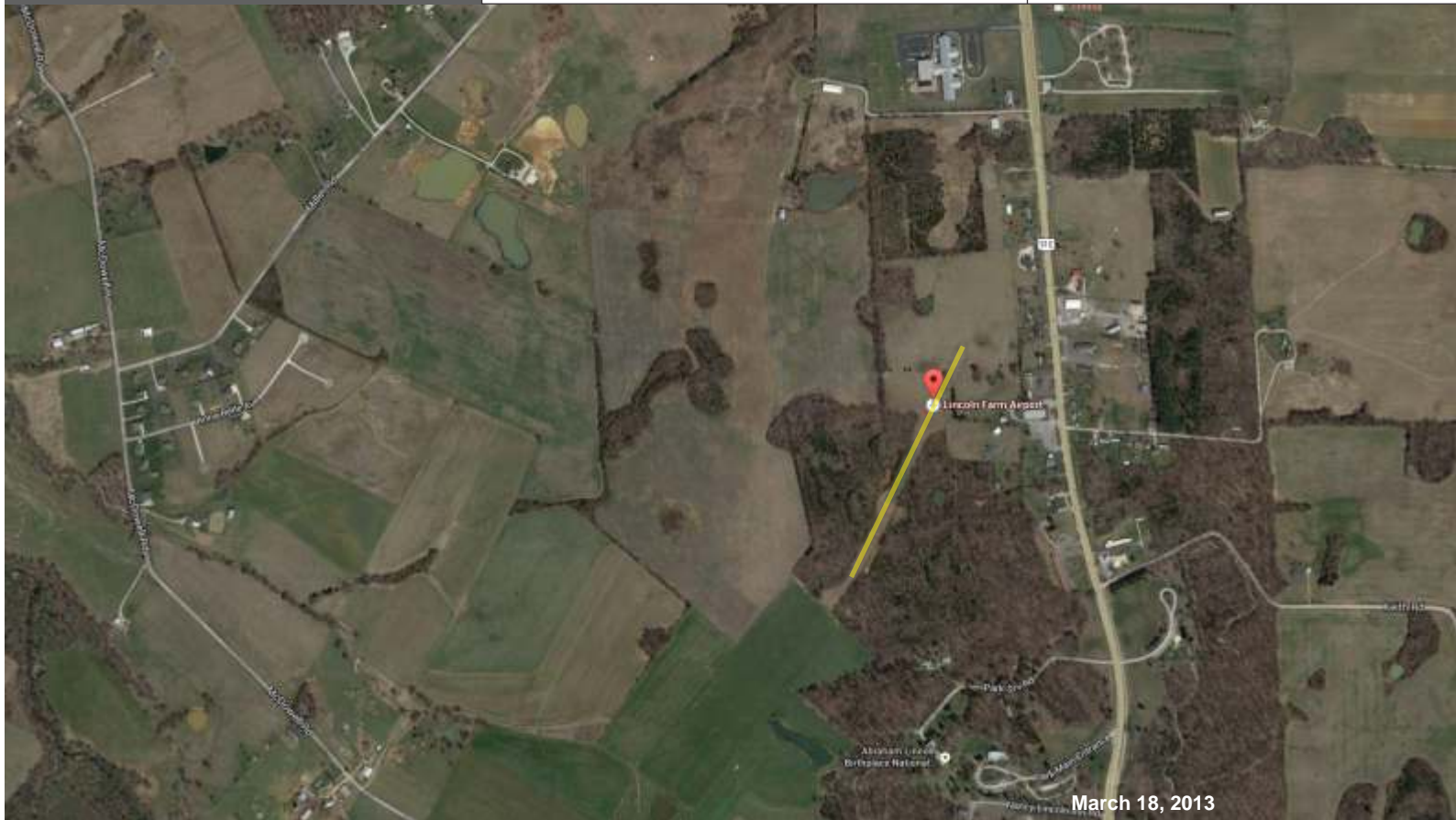
Lincoln Farm 21KY

Location

Latitude 37.5375° N Distance 23 miles
Longitude 85.7372° W Bearing 215°

Field

Elevation 778 ft Length 1500 ft
Orientation 03-21 Width 70 ft



Runway is grass. Runway slopes downward from north to south.

Brush has grown in on the edges with the narrowest part being about midfield. Width there was paced at about 70 feet.

Landing should be from south to north.
There are tall trees along the edges on both ends.

This field would require very precise approach control and in my opinion should only be used in an emergency.

Very precise approach control is required for this field - should only be used in an emergency.

Notes

Do not use for navigation, for flight verification only. Always consult the relevant publications for current and correct information. This information is provided free of charge with no warranties, expressed or implied.

Lincoln Farm 21KY

Littlemount

Location

Latitude 38.0761° N Distance 23 miles
Longitude 85.2367° W Bearing 38°

Field

Elevation 748 ft Length 1800 ft
Orientation 15-33 Width 75 ft



Runway is sod, very well kept at the time of visit.

The runway slopes uphill to the northwest approximately 20 feet over its length of 1800 feet. Landing to the northwest with tow out to the southeast is favored by terrain and slope, although the terrain to the southeast is very hostile to a forced landing.

I landed there on August 4, 2013 flying the L-33 and was aero retrieved without incident. We believe that Shawn Honacker owns the field.

The terrain to the southeast is very hostile to a forced landing

Notes

Do not use for navigation, for flight verification only. Always consult the relevant publications for current and correct information. This information is provided free of charge with no warranties, expressed or implied.

Littlemount

Mason Valley 3KY3

Location

Latitude 38.0383° N Distance 17.2 miles
Longitude 85.3594° W Bearing 26°

Field

Elevation 509 ft Length 1475 ft
Orientation 14-32 Width 80 ft



View of field to Southeast

Mason Valley is a large sod farm near Taylorsville, Kentucky. Gliders have landed there on numerous occasions, most recently 9/28/14. Owner is friendly.

The runway is marked by traffic cones at the present time. In the past the runway has been marked by white tires. The runway is moved periodically depending on where the crop is being harvested. There is high ground and a major power line to the northwest and a smaller power line on the approach from the southeast. The runway has always been in excellent condition and it lies in the middle of the sod farm providing flat approaches in both directions, being mindful of the power lines some distance out on either end.

I have landed there twice both times from the northwest to the southeast, but either direction should work well. I towed out to the southeast.

Notes

Do not use for navigation, for flight verification only. Always consult the relevant publications for current and correct information. This information is provided free of charge with no warranties, expressed or implied.

Mason Valley 3KY3

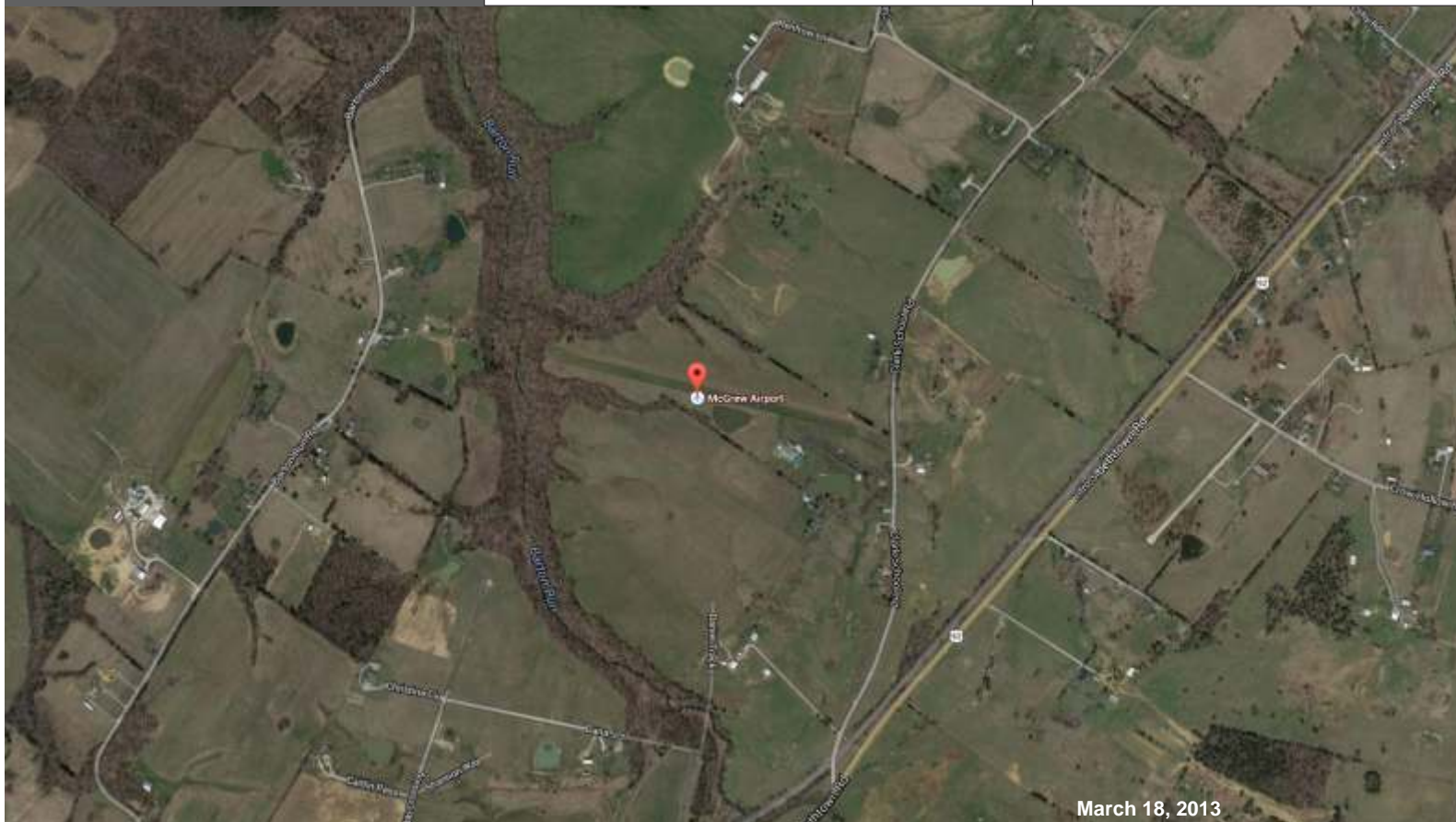
McGrew Field 66KY

Location

Latitude 37.5076° N Distance 44.1 miles
Longitude 86.2055° W Bearing 242°

Field

Elevation 720 ft Length 2400 ft
Orientation 10-28 Width 150 ft



PRI (66KY)|RY 10/28:2400x150-
TURF|OWN:ROBERT MC GREW|502-242-
7378

Runway is grass, very well kept and runs basically east west with a mild slope to the west.

Owner is friendly.

View of field to West

Notes

Do not use for navigation, for flight verification only. Always consult the relevant publications for current and correct information. This information is provided free of charge with no warranties, expressed or implied.

McGrew Field 66KY

Mike's Sod Farm

Location

Latitude 38.1652° N Distance 26.5 miles
Longitude 85.3006° W Bearing 24°

Field

Elevation 720 ft Length 1700 ft
Orientation 10-28 Width Adequate



Mike's sod farm is about 3.5 mile northeast of Willow Island and would only be used in the event one was in the vicinity with no other option.

It is a long flat field, but had some areas of dampness on the day I visited. The northern part of the field appears better drained, but is shorter.

Landing choices might also vary depending on what area had been harvested recently.

Only use in the event of no other option.

Notes

Do not use for navigation, for flight verification only. Always consult the relevant publications for current and correct information. This information is provided free of charge with no warranties, expressed or implied.

Mike's Sod Farm

Miles Field 3KY9

Location

Latitude 38.1230° N Distance 29.7 miles
Longitude 85.1256° W Bearing 44°

Field

Elevation 840 ft Length 1700 ft
Orientation 04-22 Width 80+ ft



Miles Field is a former home of the Louisville Soaring Club and is named after Bob Miles, one of the founding members of the club (and major benefactor).

Field is currently owned by Pat Patterson and a number of power aircraft are based there.

Runway is in excellent condition and measures about 1700 feet to the dog leg. There is a downward slope from northeast to southwest. Picture is taken looking from southwest to northeast.

Picture is taken looking uphill from southwest to northeast.

Notes

Do not use for navigation, for flight verification only. Always consult the relevant publications for current and correct information. This information is provided free of charge with no warranties, expressed or implied.

Miles Field 3KY9

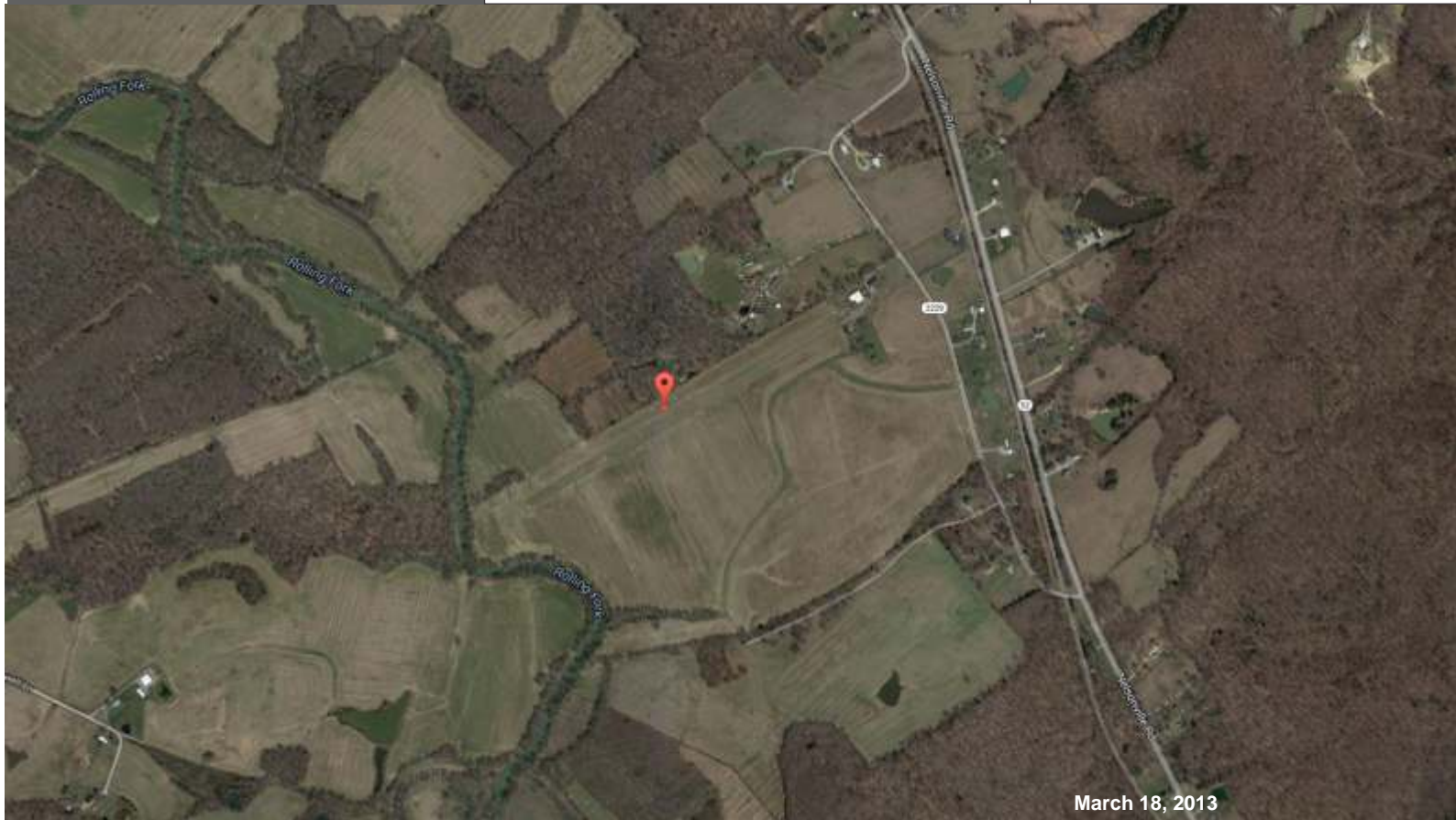
Nelsonville

Location

Latitude 37.7154° N Distance 10.2 miles
Longitude 85.6407° W Bearing 228°

Field

Elevation 452 ft Length 2500 ft
Orientation 06-24 Width 80 ft



Runway is sod in good condition at the time of visit.

About midway there is a windsock on the southern edge of the runway. Watch out for it during landing.

Owner not present at time of visit.

Field is difficult to see when approaching from the northwest. It is hidden by the treeline along the northwest edge of the runway.

Mike Carlson landed there in late August, 2014. He landed to the East and did an aero retrieve with tow out to the West. Owner's son was present and voiced no objections.

Field is difficult to see when approaching from the northwest.

Notes

Do not use for navigation, for flight verification only. Always consult the relevant publications for current and correct information. This information is provided free of charge with no warranties, expressed or implied.

Nelsonville

Oz Field 2KY4

Location

Latitude 37.6550° N Distance 20.4 miles
Longitude 85.8136° W Bearing 238°

Field

Elevation 820 ft Length 2920 ft
Orientation 14-32 Width 85 ft



Runway is sod in excellent condition at the time of visit.

Windssock is located on the southwest side of the runway about 800 feet from the south end abeam the large house.

PRI (2KY4)|RY 14/32:2930x85-TURF|RY 14/32 HAS WHITE MARKERS AT RY ENDS.|THREE RADIO TOWERS 320 FT TO 650 FT MSL LCTD 2 NM NORTHWEST OF ARPT.|OWNER DESIRES ARPT NOT BE CHARTED.|MGR: JAMES LIVERS|270-737-1049

This is a really nice airstrip.

Notes

Do not use for navigation, for flight verification only. Always consult the relevant publications for current and correct information. This information is provided free of charge with no warranties, expressed or implied.

Oz Field 2KY4

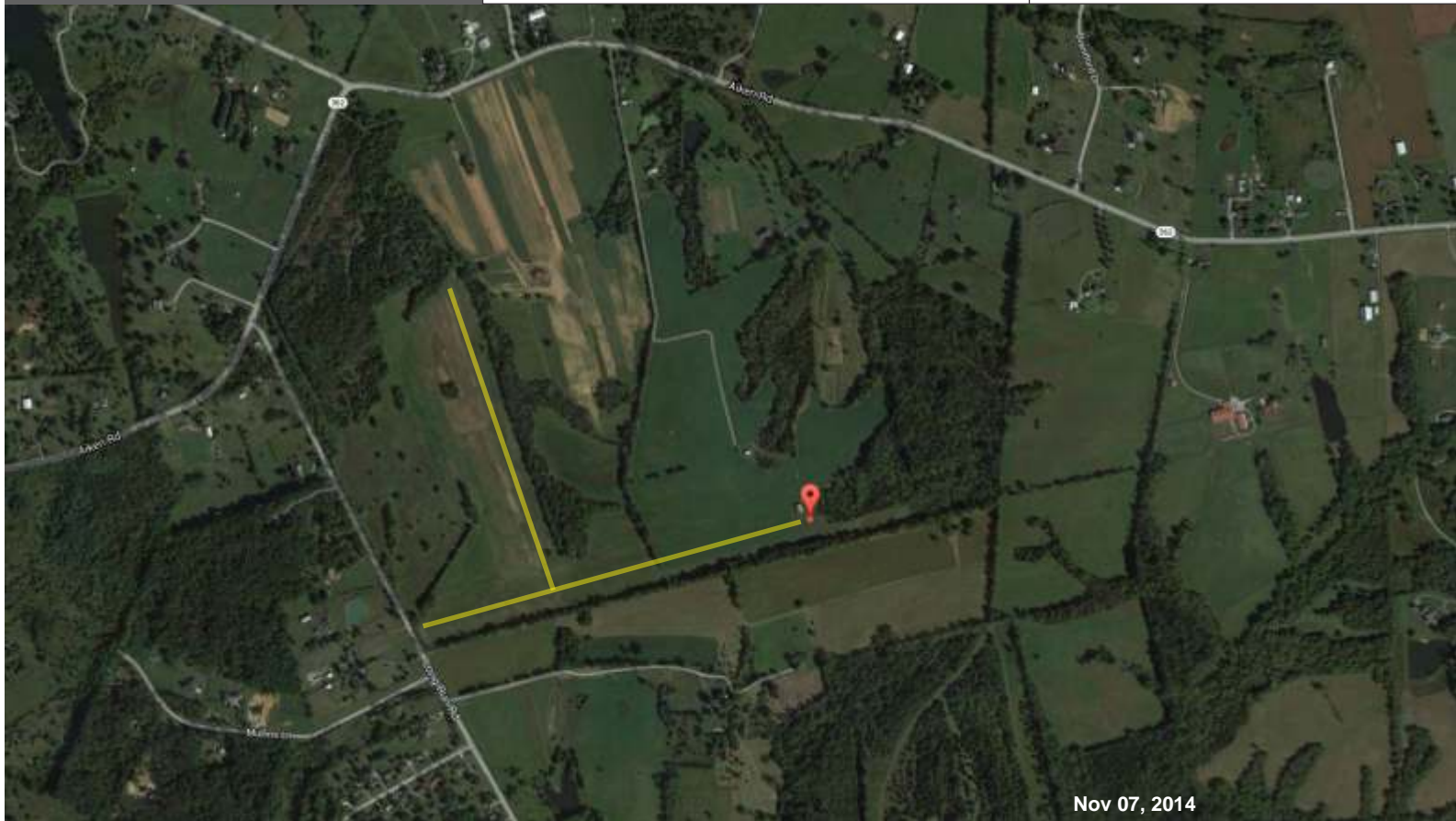
Private Air Strip

Location

Latitude 38.2833° N Distance 33 miles
Longitude 85.4039° W Bearing 09°

Field

Elevation 765 ft Length 3300 ft
Orientation 08-26 Width 80 ft



Picture is taken from the marker looking west.

I found this airstrip while visiting the sod farm to the north (note brown areas where sod has been removed). This is a large sod farm with many possibilities for emergency landings. The area indicated by the line running east west in the center of the photo appears to be in use as an airstrip (note - there was an airplane parked in hangar where the marker pin is placed).

Owner of the sod farm does not want his farm used as a landing strip and denies that there is an active air strip on the back of his property. Maybe someone else owns the air strip.

Airstrip has a good bit of roll on extreme east end. Picture is taken from the marker looking west.

Notes

Do not use for navigation, for flight verification only. Always consult the relevant publications for current and correct information. This information is provided free of charge with no warranties, expressed or implied.

Private Air Strip

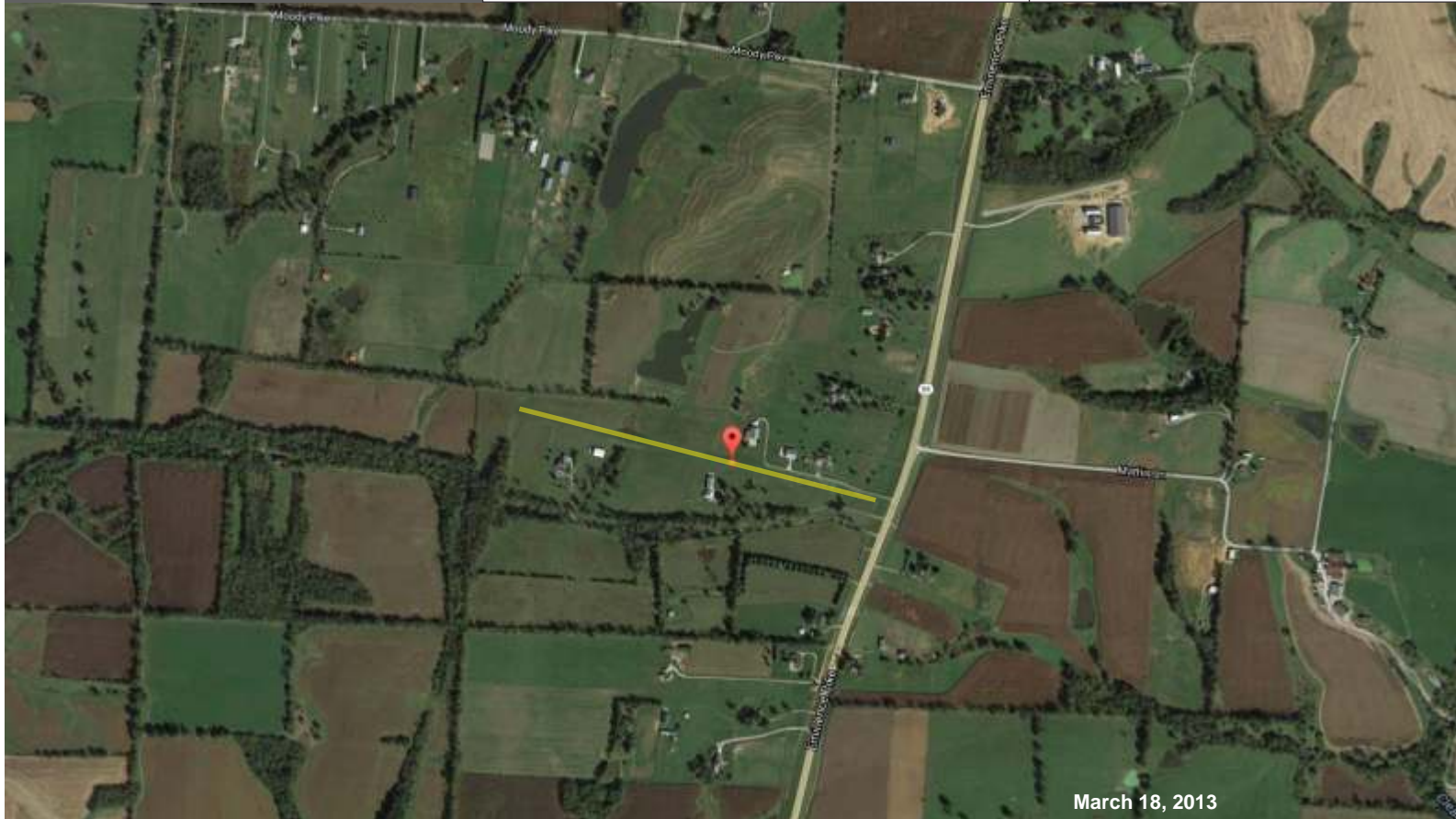
Rooster 40KY

Location

Latitude 38.2934° N Distance 37 miles
Longitude 85.2050° W Bearing 26°

Field

Elevation 765 ft Length 2000 ft
Orientation 08-26 Width 40 ft



Runway is grass and narrow. There are runway lights along each edge and berms in some areas.

The east end of the runway abuts highway 55 and is about 10 feet below the roadway with berms on either side. If a landing there were absolutely necessary land to the east with touchdown abeam the barn with the white roof on the south side of the runway, keep your wings level until between runway edge lights. You might just be able to pull it off, but it is a high risk situation.

There are several aircraft based there and the owner is friendly, however the runway is too narrow for a sailplane.

The runway is too narrow for a sailplane

Notes

Do not use for navigation, for flight verification only. Always consult the relevant publications for current and correct information. This information is provided free of charge with no warranties, expressed or implied.

Rooster 40KY

Samuel's Springs (Shultise Field)

Location

Latitude 37.8978° N Distance 6.5 miles
Longitude 85.5550° W Bearing 332

Field

Elevation 765 ft Length 1700 ft
Orientation 08-26 Width 80+ ft



Runway is sod, very well kept at the time of visit.

The strip slopes upward from northeast to southwest with the most pronounced slope in the first 500 or so feet at the northeast end. Best to approach from the northeast and land to southwest. Be sure avoid tall trees and to allow for the upward slope on the northeast end. Bourbon warehouses parallel the runway and are good landmarks. Wires located at southern end.

Numerous landings and aero retrieves have been done at this field. This would make a good practice outlanding field for the club.

Plan to land to the south and depart to the north.

Notes

Do not use for navigation, for flight verification only. Always consult the relevant publications for current and correct information. This information is provided free of charge with no warranties, expressed or implied.

Samuel's Springs (Shultise Field)

Schindler's Field

Location

Latitude 38.5611°N Distance 51.2 miles
Longitude 85.4463°W Bearing 03°

Field

Elevation 807 ft Length 3200 ft
Orientation 17-35 Width 60 ft



Runway is grass, closely cut at the time of visit.

There is a green and white barn at the south end of the runway. There are some mild undulations in the mid portion. There is a CONE SHAPED OBSTRUCTION (appears to be a large traffic cone) on the west side of the runway about 1000 feet from the south end. It is on the runway and would require deviation from the midline to avoid. It marks a survey station and should be avoided.

The owner, Robert Schindler is friendly to pilots.

A cone shaped survey station toward the south end should be avoided

Notes

Do not use for navigation, for flight verification only. Always consult the relevant publications for current and correct information. This information is provided free of charge with no warranties, expressed or implied.

Schindler's Field

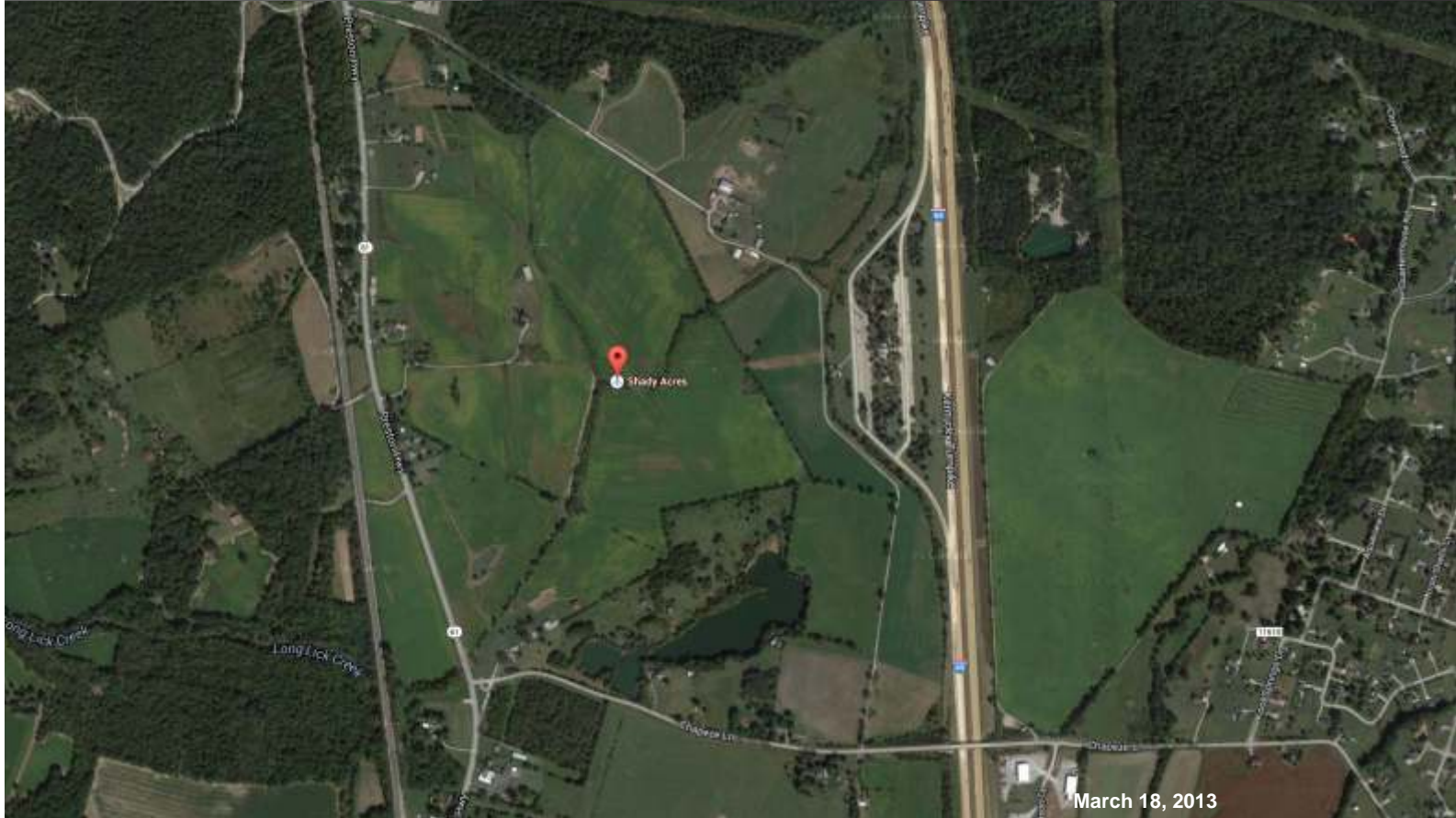
Shady Acres (4KY8)

Location

Latitude 37.9458° N Distance 14.3 miles
Longitude 85.6969° W Bearing 310°

Field

Elevation 445 ft Length 2200 ft
Orientation 14-32 Width 80 ft



This field is no longer maintained as an airfield.

At the time of visit the surface was harvested soy bean crop and would make a good emergency landing strip. The field has been planted in soy beans the last two seasons and corn prior to that. Runway surface conditions will depend on time of year and crop planted.

A good landmark is the interstate rest area immediately east of the field. Tenant farmer present at time of visit states that houses will soon be built in this field.

Best to touchdown beyond the stream that traverses the runway near the midfield point, but this is not absolutely necessary.

No longer maintained as an airfield

Notes

Do not use for navigation, for flight verification only. Always consult the relevant publications for current and correct information. This information is provided free of charge with no warranties, expressed or implied.

Shady Acres (4KY8)

Ultralight Field

Location

Latitude 37.7750° N Distance 12 miles
Longitude 85.2860° W Bearing 103°

Field

Elevation 729 ft Length 800 ft
Orientation 17-35 Width 50 ft



Paul and I visited this field in August of 2012. The owner was not present, but we were told that it is used as a RC field.

The runway is paved 800 feet by 50 feet with wide shoulders and approximately 300 feet of rough over run going uphill at the north end. There is structure on the west side of the runway about 300 feet from the south end. There is enough width to avoid this obstacle.

Landing to the north would be favored because of the over run and the slope. The paved runway is very nearly level.

If you land here you will be doing a trailer retrieve.

Note - Pin on satellite photo is located at position from which above ground-level photo was taken.

Notes

Do not use for navigation, for flight verification only. Always consult the relevant publications for current and correct information. This information is provided free of charge with no warranties, expressed or implied.

Ultralight Field

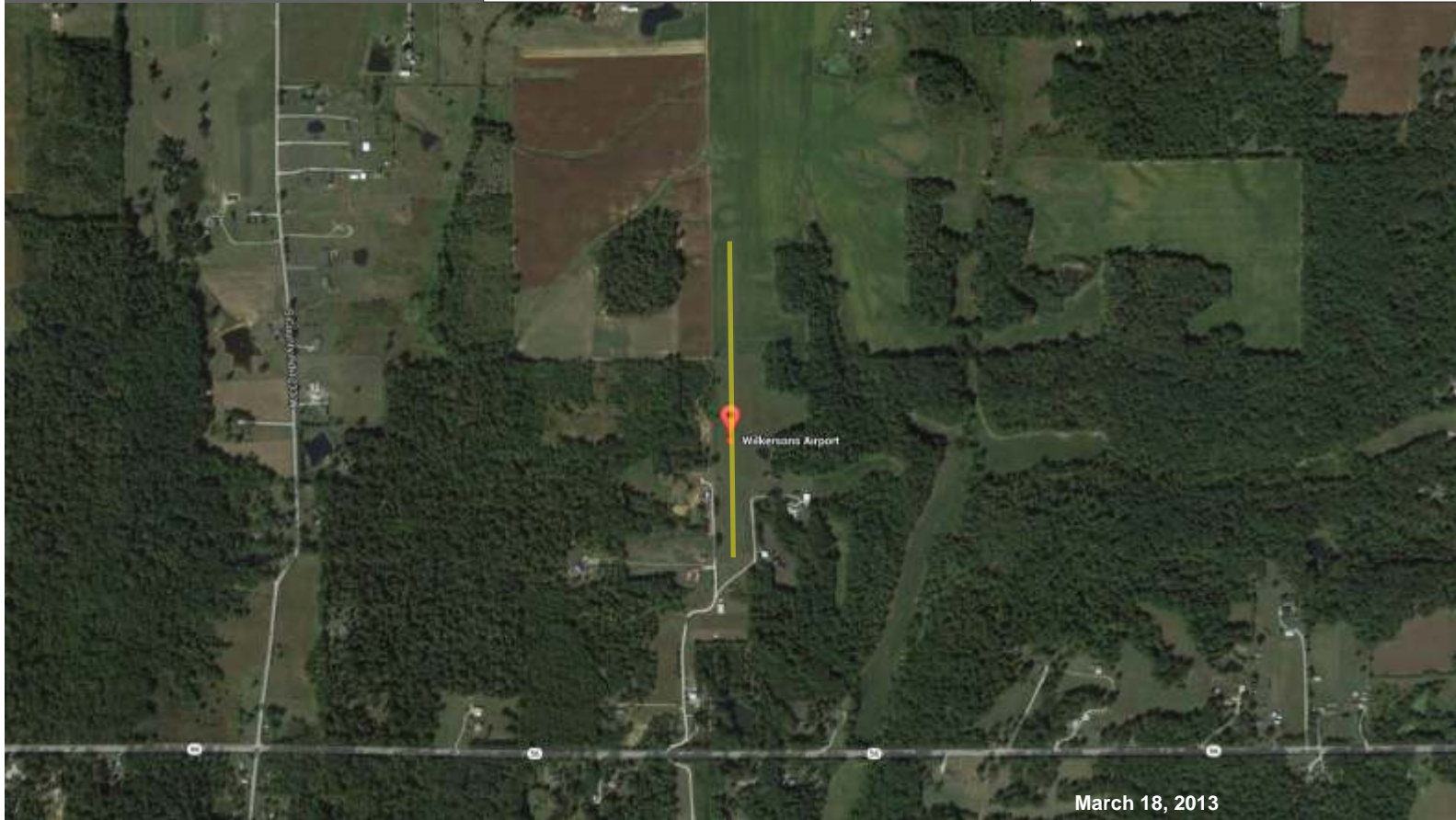
Wilkerson's Airport 61IN

Location

Latitude 38.7137° N Distance 62.7 miles
Longitude 85.6036° W Bearing 355°

Field

Elevation 730 ft Length 2500 ft
Orientation 18-36 Width 80 ft



Runway is sod, very well kept at the time of visit. Closely mowed area is 50 feet wide, but additional width is clear.

Windssock located near south end on west side.

White water tower northwest of field.

PRI (61IN)|RY 18/36:2550x60-TURF|MGR:
FRED & HAZEL WILKERSON|812-866-
2825|OTHER CONTACT: MARK
WILKERSON 2578W DEPUTY RD.
MADISON IN 47250 - 812-273-1304

Lexington, IN - Private use

Notes

Do not use for navigation, for flight verification only. Always consult the relevant publications for current and correct information. This information is provided free of charge with no warranties, expressed or implied.

Wilkerson's Airport 61IN

Willow Island 58KY

Location

Latitude 37.1208° N Distance 23 miles
Longitude 85.3317° W Bearing 23°

Field

Elevation 738 ft Length 2400 ft
Orientation 10-28 Width 80 ft



View from East to West. Uphill slope

Willow Island is a grass strip that is part of fly in community. One of our club members resides there.

The main runway(northern most) is in very good condition and Brian landed there recently and was aero retrieved. Terrain drops off at the east end of the runway.

There is a second runway south of the main runway, but it is shorter, narrower, and basically oriented in the same direction, so I don't think there is any reason to use it.

For the last several years there has been an aircraft parked on the south side of the main runway about midfield. It poses no hazard and helps mark the site as an airfield.

Notes

Do not use for navigation, for flight verification only. Always consult the relevant publications for current and correct information. This information is provided free of charge with no warranties, expressed or implied.

Willow Island 58KY

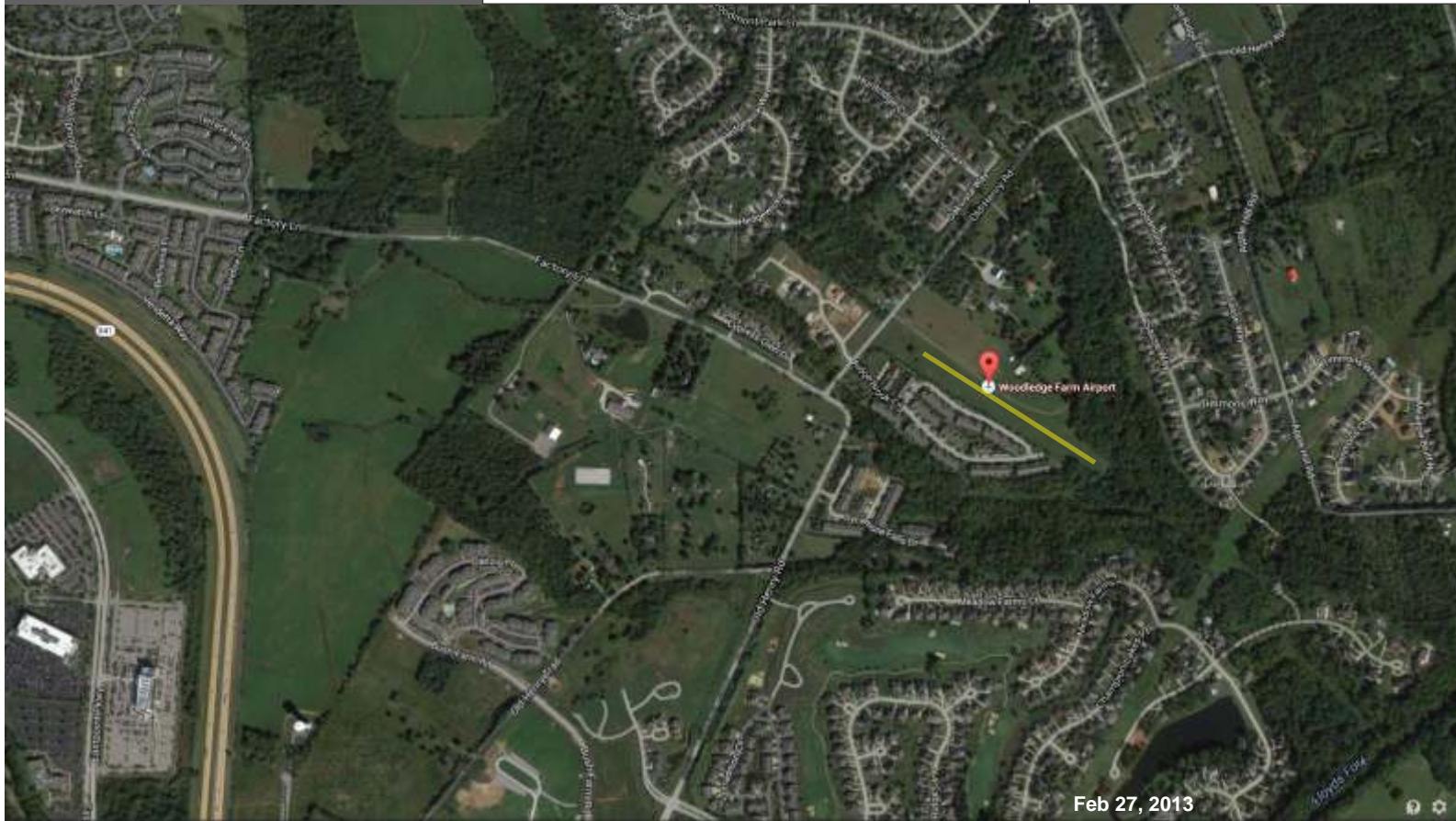
Woodledge Airport 82KY

Location

Latitude 38.2834° N Distance 32 miles
Longitude 85.4819° W Bearing 01°

Field

Elevation 680 ft Length 1700 ft
Orientation 12-30 Width 85 ft



Runway is grass and in good shape at the time of visit. It is located in eastern Jefferson County on the edge of SDF Charlie airspace and surrounded by subdivisions.

It is owned by E.J. Schickli, one of the founding members of the Louisville Soaring Club and the individual that donated the K-6 to the club.

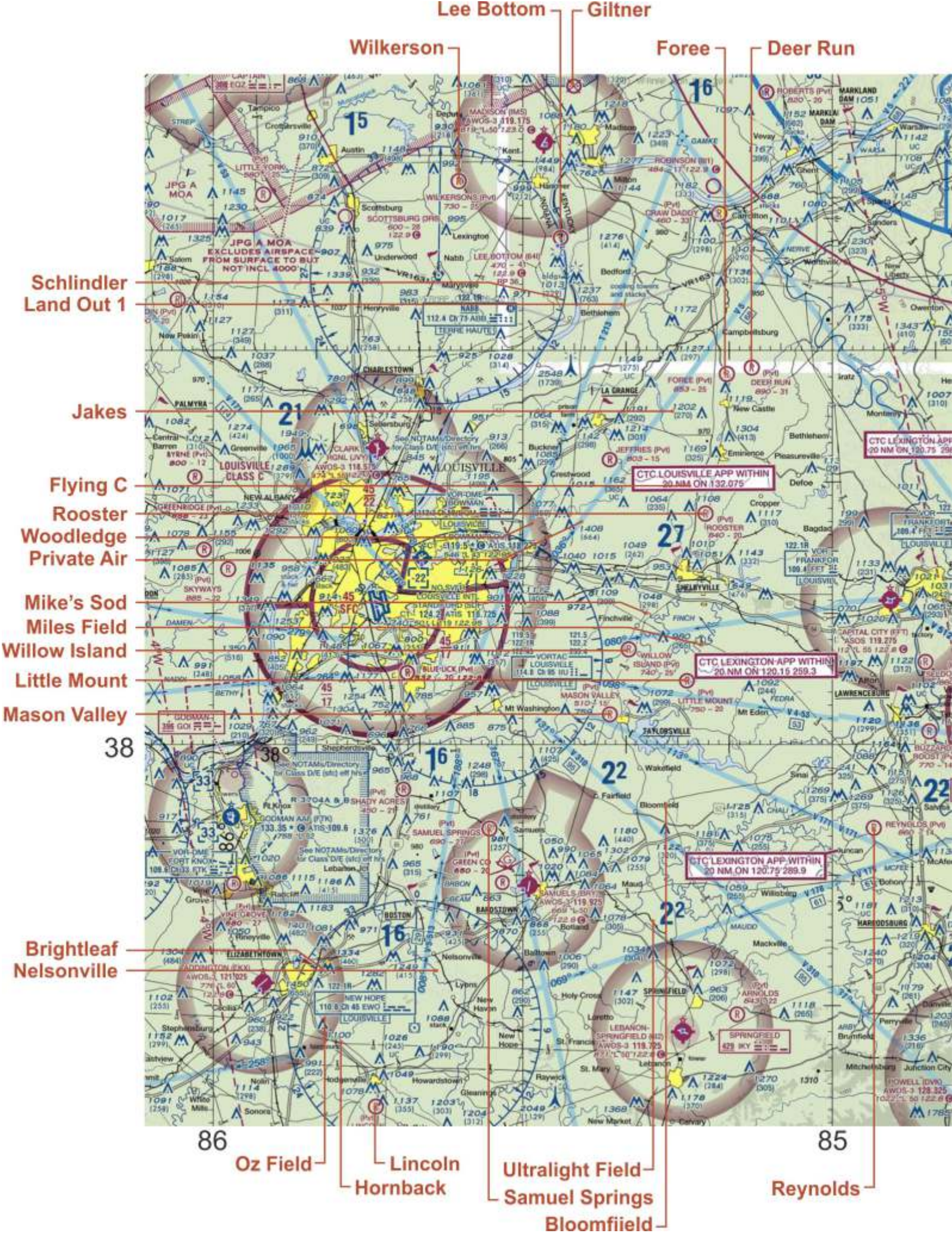
There are power lines (marked with orange balls) at the northwest end of the field and trees at the southeast end. Windssock is on the west side about midway along the runway. Timmon's field, a portion of which can be seen in the lower right hand corner of this picture, is no longer usable and should be removed from the sectional charts.

Trees at Southeastern end, wires at Northwestern end of runway

Notes

Do not use for navigation, for flight verification only. Always consult the relevant publications for current and correct information. This information is provided free of charge with no warranties, expressed or implied.

Woodledge Airport 82KY



Lee Bottom Giltner

Wilkerson

Foree

Deer Run

Schindler
Land Out 1

Jakes

Flying C

Rooster

Woodledge

Private Air

Mike's Sod

Miles Field

Willow Island

Little Mount

Mason Valley

38

Brightleaf
Nelsonville

86 Oz Field

Lincoln
Hornback

Ultralight Field
Samuel Springs
Bloomfield

85 Reynolds



CTC LOUISVILLE APP WITHIN
20 NM ON 132.075

CTC LEXINGTON APP WITHIN
20 NM ON 120.15 259.3

CTC LEXINGTON APP WITHIN
20 NM ON 120.75 289.9

SPRINGFIELD
429 MLY

CTC LEXINGTON APP
20 NM ON 120.75 296

FRANKFORT
188.4 FREQ

ASOS 119.275
12.1 L 55 122.8

BOZZARDS
800ST 114

POWELL (DVO)
AWOS-3 128.325
102.2 L 50 122.8